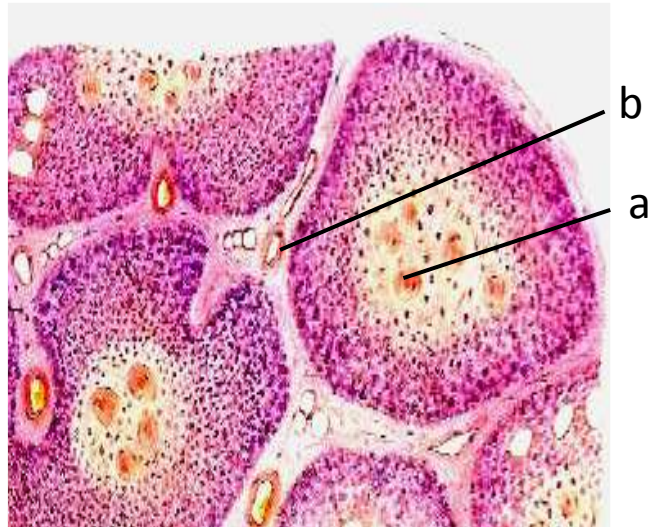


**CITY COLLEGE, MID SEM EXAMINATION-2020**  
**SEMESTER-4, Paper: ZOOA –CC4-10-P**  
**Full Marks: 15**

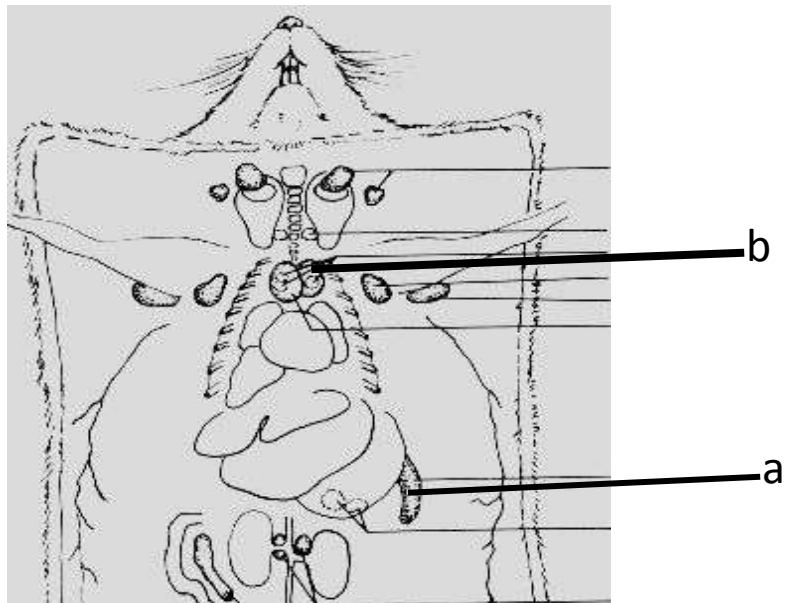
**Q.1A. Identify and write two key characters of the specimen-photograph. Name the labeled parts as marked in the photographs (a,b). (1+2+2)**

**Q.1B. Name and write two key characters of each labeled parts as marked in the photographs (a,b). 2+(2X2)**

Q.1.A



Q.1.B



**Q.2. a. For Sandwich ELISA, the first coating of the plate will be done by what type of Ag/Ab?**

**b. Name two enzymes used in ELISA.**

**c. By which type of ELISA, antibody can be detected? (1+2+1)**